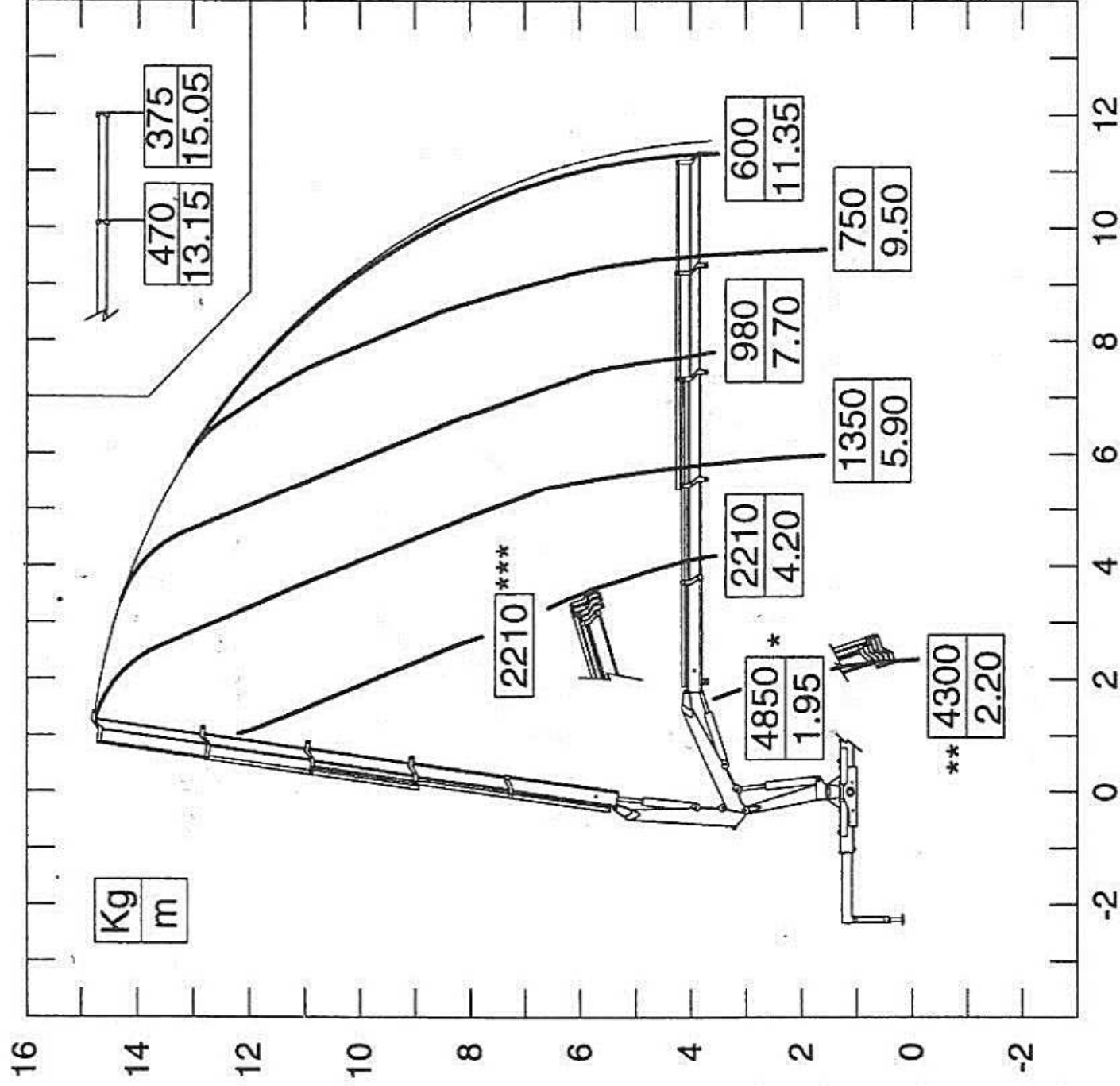


**PM 10024**


\* PORTATA NOMINALE AL GANCIO FISSO.  
 \*\* PORTATA MASSIMA AL GANCIO MOBILE.  
 \*\*\* PORTATA MASSIMA PASSANTE PER L'ORIZZONTALE.  
 NOTA: LE PRESTAZIONI INDICATE SI OTTENGONO CON BRACCIO PRINCIPALE A 27°

\* MAX. NOMINAL CAPACITY WITH FIXED HOOK.  
 \*\* MAX. CAPACITY WITH MOBILE HOOK.  
 \*\*\* MAX. CAPACITY FROM HORIZONTAL TO VERTICAL.  
 NOTE: THE STATED PERFORMANCES CAN BE OBTAINED WITH 27° INCLINATED MAIN BOOM.